

# 461 Ash Ln, Lansing, KS

*Wyndham  
Hill  
on the Park  
with 3-car  
Garage!*



Hansen Properties

Rick & Shari Hansen  
913.547.1113/1114  
www.hansensproperties.com

Email:  
Hansensproperties@yahoo.com

- **Type of Rental:** Two story with finished basement, approx 2700 sq feet finished.
- **Security deposit:** One month's rent
- **Pets deposit:** Refer to Pet Policy
- **5 bedroom**, Four on UL (2nd story) and one in basement (LL)
- **3.5 baths** 2 full on UL, Primary bath en suite has corner tub & double vanity sink, powder room main level & full bath Basement Level.
- **Kitchen:** Appliances include Refrigerator, electric range oven, microwave, & dishwasher. Hardwoods throughout most of main floor.
- Main floor has formal dining and living room with fireplace.
- BL has family room, bedroom & full bath.
- Washer/Dryer hook ups.
- Central air & heat
- Concrete patio off BL family room and base of deck stairs.
- **3 car garage**
- **Fenced Yard:** Yes.
- Lansing School District.
- Located in Wyndham Hill Subdivision which has playground.
- 15 minutes from Ft. Leavenworth.

# 461 Ash Ln, Lansing, KS

**MAIN LEVEL** has kitchen, dining room, living room with fireplace and half bath. Four bedrooms are located on the 2nd story.



**Primary bedroom** is large and has trayed ceiling and large walk in closet. Primary bath en suite includes double vanity sink, corner tub, separate shower and toilet room.



# 461 Ash Ln, Lansing, KS



**UPPER LEVEL:** Photos of other three bedrooms and the hall bath that has double vanity sink.

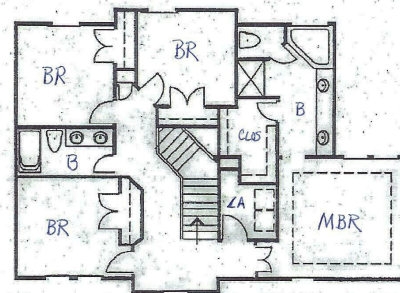
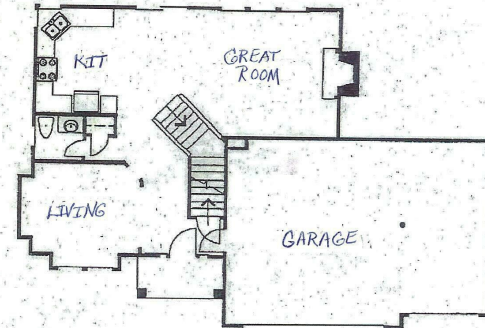


**BASEMENT LEVEL:** Photos of family room, 5th bedroom, & full bath.



# 461 Ash Ln, Lansing, KS

*Floor plan sketch of main level and upper level where 4 bedrooms are located.*



**The beautiful, private backyard is fully fenced, has a shed for all your lawn equipment, and also a very large deck (access from the kitchen area) so you can enjoy the outdoors during nice weather!**

