

2117 Birch St, Leavenworth, KS

*Spacious
3-car
garage!*



- **Type of Rental:** Split entry style home with approx 2600 sq feet finished.
- **Monthly Rent:** \$2350
- **Security deposit:** One months rent
- **Pets:** Refer to pet policy
- **5 bedroom, 3 UL, 2 LL**
- **3 baths, 2 on UL, 1 on LL.** Master bath en suite has double vanity sinks and walk in closet.
- **Kitchen:** Appliances include Refrigerator, electric range oven, microwave, & dishwasher. Center island with seating and additional cabinetry. Corner pantry closet.
- Home has main floor living room and lower level family room with fireplace.
- Laundry room in hallway.
- Central air & heat
- Deck off dining room with stairs to back yard, concrete patio
- **3 car garage**
- **Fenced Yard, wooden privacy**
- Lansing School District.
- Branches Subdivision with neighborhood playground.
- 15 min from Ft. Leavenworth.

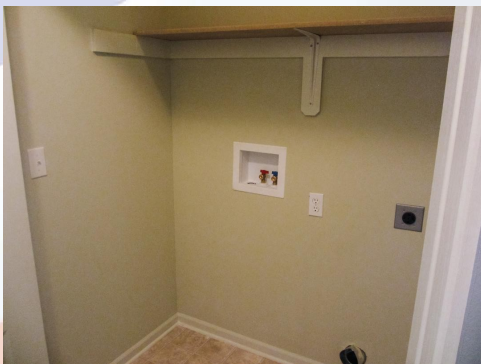
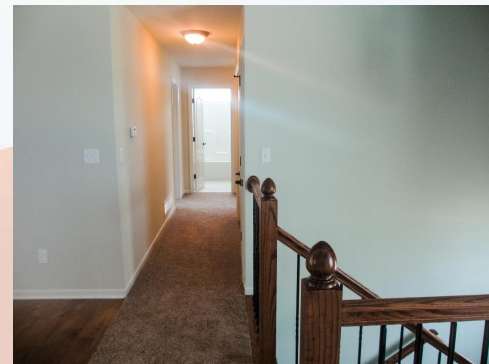
Hansen Properties

Rick & Shari Hansen
913.547.1113/1114
www.hansensproperties.com

Email:
Hansensproperties@yahoo.com

2117 Birch St, Leavenworth, KS

UPPER LEVEL: Open concept with large kitchen opening up into dining room with hardwoods throughout kitchen & dining room. Kitchen has a center island with seating as well as corner closet pantry. Living room, full bath in hall, laundry closet, two spacious bedrooms, and the primary bedroom with large walk in closet and en suite are also located on this level. Access deck and backyard from dining room.

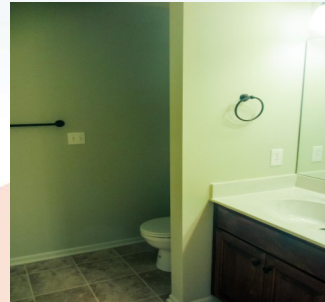


UL Hall Bath.



2117 Birch St, Leavenworth, KS

**Master Bedroom
& Bath views:**



Two more spacious bedrooms on upper level (UL) with roomy closets.



LOWER LEVEL: Family room with fireplace, two bedrooms and full bath are located on the lower level. Access to the 3-car garage is on this level.



2117 Birch St, Leavenworth, KS

Floor Plan Sketch— To be posted, call for details. This is a traditional split floor plan.

View of garage interior (photo taken during construction)



BACK YARD: Fully fenced with wooden privacy fence, concrete patio, and deck which is accessible from kitchen/dining area. Photo of back yard taken prior to lawn planted.

