

## Highland Pointe Subdivision

# 740 Highland Terrace Leavenworth, KS

*Popular floor  
plan in  
Highland  
Pointe!*



- **Type of Rental:** Front to back split entry style home with approx 2200 sq feet finished.
- **Monthly Rent:** \$2200
- Security deposit: one months rent
- **Pets:** Refer to pet policy.
- **4 bedroom**, 3 UL, 1 LL
- **3 baths**, 2 on UL, 1 on LL
- **Kitchen:** Appliances include Refrigerator, electric range oven, microwave, & dishwasher.. Center island offers additional prep space. Granite countertops.
- Deck off dining room
- Fireplace in LL family room.
- Walk out basement with access to back yard.
- Washer/Dryer hook ups UL
- Central air & heat
- **3 car garage**
- **Fenced Yard:** wooden privacy
- Lansing School District.
- House is in popular Highland Pointe neighborhood with playground & covered picnic area. Located approximately 10 min from Ft. Leavenworth.

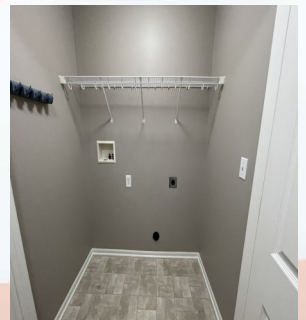
Hansen Properties

Rick & Shari Hansen  
913.547.1113/1114  
[www.hansensproperties.com](http://www.hansensproperties.com)

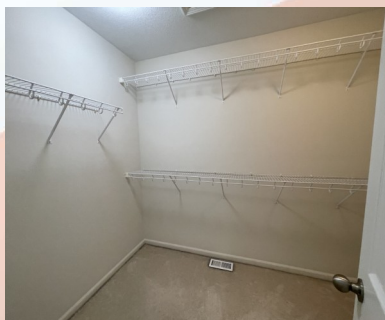
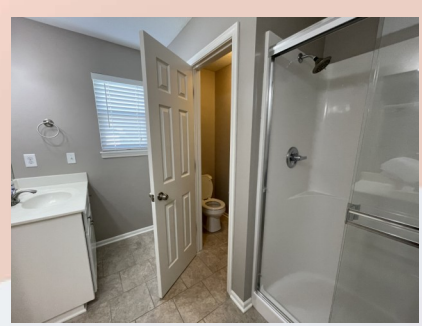
Email:  
[Hansensproperties@yahoo.com](mailto:Hansensproperties@yahoo.com)

# 740 Highland Terrace, Leavenworth, KS

Popular open floor plan, kitchen has granite countertops.



**Primary bedroom and en suite pictures: Primary bedroom is a generous bedroom with bath that has two separate vanity sinks, shower and toilet room. Closet entrance is between the two vanities. Washer & Dryer closet is located in hallway.**

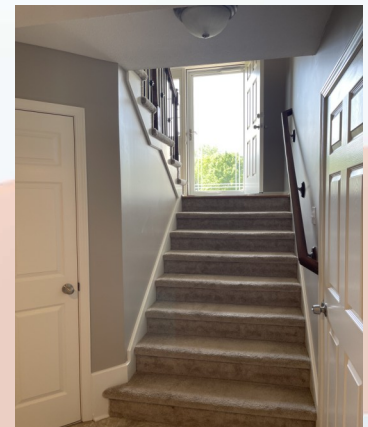


# 740 Highland Terrace, Leavenworth, KS

Main level has two additional generous bedrooms and a hall bath.



**Pictures of the lower level: Walkout access to the back yard from family room with fireplace. The 4th bedroom, hall bath and a large storage area are on this level. You enter the house from the garage on this level next to the stairs.**

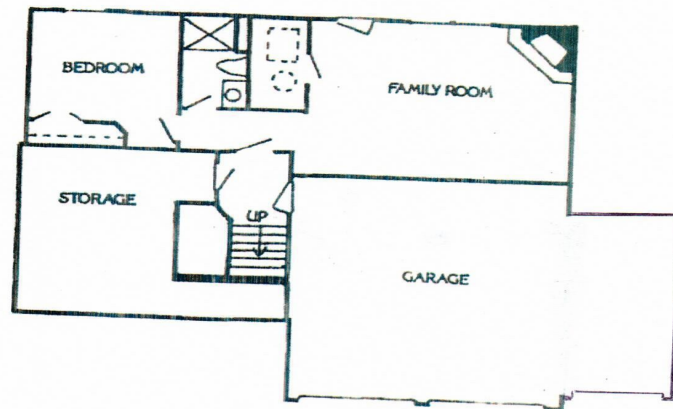
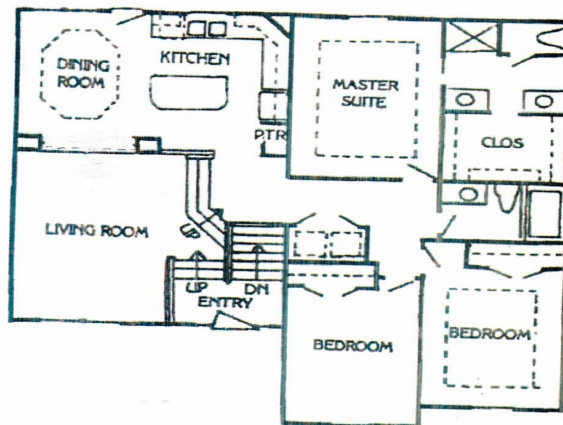


# 740 Highland Terrace, Leavenworth, KS

Picture of 3 stall garage interior and backside of house.



This floor plan shows room placement but is reversed so the garage is on the left side of the house, living and kitchen on the right, etc.



Actual homes may vary from elevation and floorplan shown