

4307 Broadway Ter, Leavenworth, KS

*Quiet
Neighborhood
and the safety of
living on a
Cul de sac!*



Hansen Properties

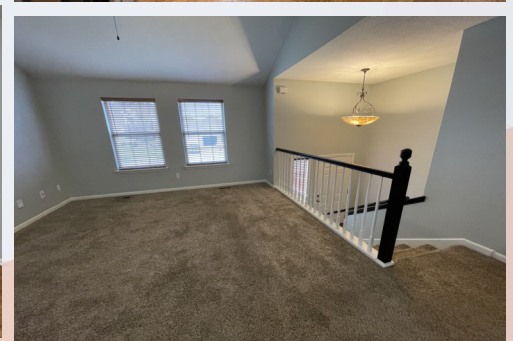
Rick & Shari Hansen
913.547.1113/1114
www.hansensproperties.com

Email:
Hansensproperties@yahoo.com

- **Type of Rental:** Split entry style home with approx 1900 sq feet finished.
- **Monthly Rent:** \$2100
- **Security deposit:** One month's rent
- **Pets:** Refer to Pet Policy
- **4 bedroom**, 3 UL, 1 LL that has French doors and can be used as either a bedroom, office or additional family room space.
- **3 baths**, 2 on UL, 1 on LL
- **Kitchen:** Appliances include Refrigerator, electric range oven, microwave, & dishwasher.. Lots of cabinetry and beautiful granite countertops.
- **Deck** with stairs to backyard.
- **Fireplace:** LL family room.
- **Laundry hookups** are located on LL near garage entry.
- **Central air & heat**
- **2 car garage**
- **Fenced Yard**, yes, wooden privacy, shadow box style, 2 gates.
- Leavenworth School District.
- House centrally located, easy access to 10th Avenue, approx 10 min from Ft. Leavenworth.

4307 Broadway Ter, Leavenworth, KS

Main Floor has living room with vaulted ceiling. Kitchen has ample cabinetry and granite countertops and is open to the dining room, Three bedrooms are also located on this level which includes the primary bedroom with private en suite. A second full bathroom with a shower/tub combo is also located on this level and situated in the hallway making it convenient for the other bedrooms and living spaces. Deck access is through the dining room double atrium doors.



4307 Broadway Ter, Leavenworth, KS

Views of main floor bedrooms and hall bath.



Primary bedroom has an ensuite with shower and his & hers closets.



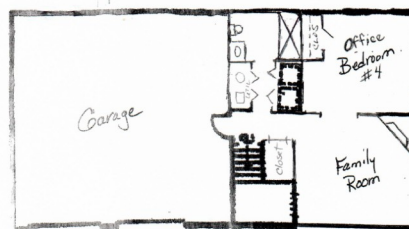
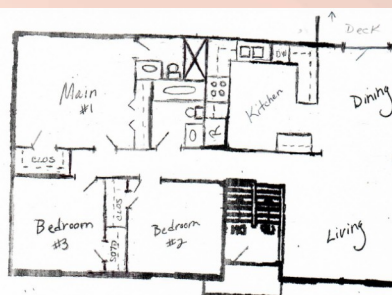
Lower level photos of full bath and laundry area.



4307 Broadway Ter, Leavenworth, KS



Floor plan sketch to give you an idea of layout—NOT TO SCALE!



Actual homes may vary from elevation and floorplan shown



Backyard is fenced with privacy wooden fence and has a large storage shed for lawn equipment, etc.

