

# 2420 S 23rd St, Leavenworth, KS

*Beautifully  
updated in  
2024!*



- **Type of Rental:** Multi level style home with approx 2450 sq feet finished.
- **Monthly Rent:** \$2150
- Security deposit (one months rent) & Pet deposit if pet approved (1/2 months rent)
- **5 bedroom**, 1 Top level, 2 ML, 1 LL & 1 BL
- **3 baths**, 1 top level (master), 1 ML, & 1 LL. Master bath en suite has double vanity sinks and garden tub with separate walk in shower.
- **Kitchen:** Appliances include Refrigerator, electric range oven, microwave, & dishwasher..
- Garage level great room with fireplace, LL family room with walk out to back yard.
- Washer/Dryer hook ups: LL laundry room.
- Central air & heat
- Deck access from kitchen with stairs to back yard
- **2 car garage**
- **Shed**
- **Fenced Yard, wooden.**
- Leavenworth School District.
- Quiet neighborhood with easy access to 20th Street, approx 10 minutes from Ft. Leavenworth west gate.

Hansen Properties

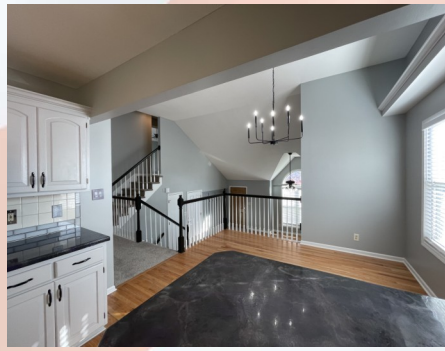
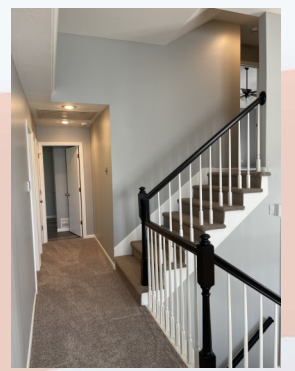
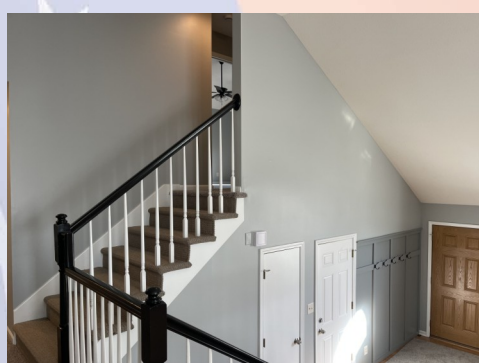
Rick & Shari Hansen  
913.547.1113/1114  
[www.hansensproperties.com](http://www.hansensproperties.com)

Email:  
[Hansensproperties@yahoo.com](mailto:Hansensproperties@yahoo.com)



# 2420 S 23rd St, Leavenworth, KS

**GARAGE & MAIN LEVEL:** Open concept great room with fireplace and view to kitchen and dining (separated by railing). Two bedrooms and a hall bath are also located on this level. Next level up (Top) is where Master bedroom & master en suite are located (above garage). Location of Master offers privacy and is very generous in size, has large walkin closet with built in shelving and generous bath with double vanity sinks, stand alone tub & separate shower. Shower & toilet room has built in storage shelving.



Hall bath on kitchen level next to bedrooms.





# 2420 S 23rd St, Leavenworth, KS



**LOWER LEVEL & BASEMENT LEVEL:** Family room with walk out to patio, laundry room, full bath and bedroom are located on lower level. Take half flight stairs below grade to basement level and there is a large bedroom. Makes a great space for hobby room, exercise room, storage, or private get-away for that teen in your family.





# 2420 S 23rd St, Leavenworth, KS



Garage interior, shed, and back yard views.

Sketch of floor plan to give you an idea of room placement and layout of home – NOT TO SCALE.

