

# 1134 Olive Leavenworth, KS

*Beautifully  
renovated  
in 2022!*



- **Type of Rental:** Duplex with approx 1150 sq feet finished. Unfinished basement for storage and/or workout room.
- **Monthly Rent:** \$1350
- **Security deposit:** One month's rent
- **Pets:** Refer to Pet Policy
- **3 bedroom.** Spacious bedrooms with generous closets & ceiling fans. Main bedroom has two closets.
- **1.5 bath.** Full bath is located on upper level next to bedrooms, has shower tub combo and linen closet for storage. Half bath is located on main level.
- **Kitchen:** Spacious kitchen & dining room combo. Appliances include Refrigerator & Electric oven range.
- **Living Room.** Main floor located at front entry.
- Washer/Dryer hookups located in basement.
- **Central air & heat**
- Off street parking in back of duplex.
- **Utility shed** for storage of lawn equipment, etc.
- Leavenworth School District.
- Close to Spruce & 10th street with easy access to downtown and Ft. Leavenworth.

Hansen Properties

Rick & Shari Hansen  
913.547.1113/1114  
[www.hansensproperties.com](http://www.hansensproperties.com)

Email:  
[Hansensproperties@yahoo.com](mailto:Hansensproperties@yahoo.com)

# 1134 Olive, Leavenworth, KS

**Main floor has vinyl plank flooring and neutral paint throughout. Living room, coat closet, dining room/kitchen combo, and oversized half bath are located on this level. Back entrance is located next to the half bath & access to basement level.**



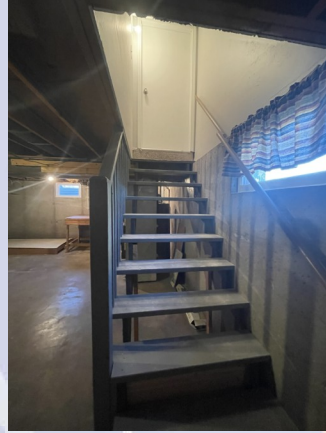
# 1134 Olive, Leavenworth, KS

**Second floor has a full bath at the top of the stairs, main bedroom with two closets, and two additional bedrooms with generous closets. All bedrooms have ceiling fans and carpeted floors, hallway and stairs are carpeted, hall bath has vinyl plank flooring.**



# 1134 Olive, Leavenworth, KS

**Basement is unfinished and provides excellent space for storage or additional living space if needed. Washer & dryer hookups are located on this level behind staircase and utility area.**



***There is off street parking to rear of duplex. Property has a shed to store your lawn mowers & yard equipment, etc. Shed has an interior wall to separate your items from the neighbor and the exterior door is equipped with a lock.***

