

# 2812 Folsom, Leavenworth, KS

*Big  
kitchen &  
lots of  
space!*



Hansen Properties

Rick & Shari Hansen  
913.547.1113/1114  
[www.hansensproperties.com](http://www.hansensproperties.com)

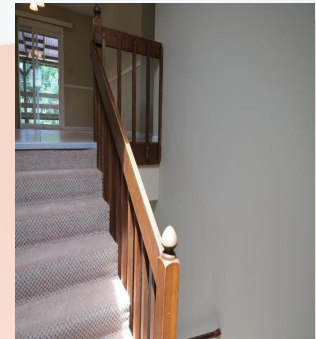
Email:  
[Hansensproperties@yahoo.com](mailto:Hansensproperties@yahoo.com)

- **Type of Rental:** Front to back split entry style home with approx 2500 sq feet finished.
- **Monthly Rent:** \$1600
- Security deposit (one months rent) & Pet deposit if pet approved (1/2 months rent)
- **4 bedroom**, 3 UL, 1 LL
- **3 baths**, 2 on UL, 1 on LL
- Kitchen: Appliances include Refrigerator, electric range oven, microwave, & dishwasher.. Lots of cabinetry with peninsula and closet pantry.
- Covered deck off dining room.
- Fireplace in LL family room.
- Walk out basement with access to back yard. Concrete patio.
- Washer/Dryer hook ups LL (part of bathroom).
- Central air & heat
- **2 car garage**
- **Fenced Yard**, yes, wooden
- Leavenworth School District.
- House is centrally located with easy access to 10th & 20th Avenues. Located approximately 10 min from Ft. Leavenworth.

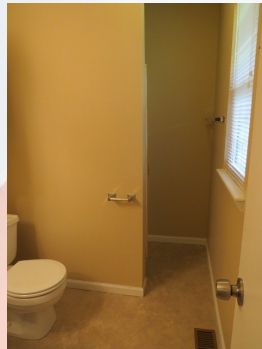
# 2812 Folsom, Leavenworth, KS



Spacious rooms in this home, lots of cabinetry, open floor plan in living areas.



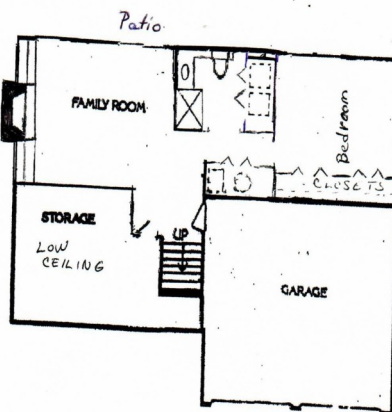
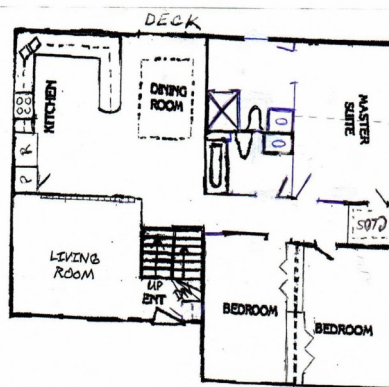
Master bedroom has en suite and features vaulted ceilings.



Bath in upper hallway sits across hall from the two large bedrooms.



Basement family room has fireplace with built-ins and walkout access to back patio & beautiful yard.



Basement bedroom is spacious & has two large closets. There is a large storage space located under the living room for all your storage needs.

