

1321 Holman St, Leavenworth, KS

*Beautiful,
spacious home
in popular
neighborhood!
Pretty wood
throughout!*



Hansen Properties

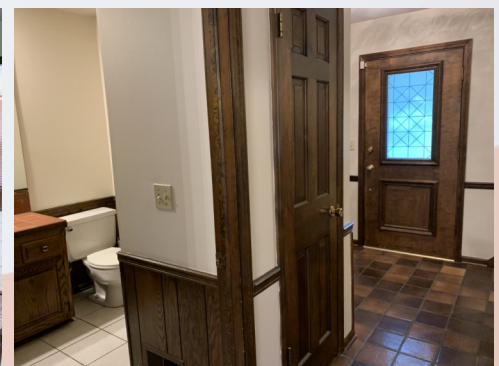
Rick & Shari Hansen
913.547.1113/1114
www.hansensproperties.com

Email:
Hansensproperties@yahoo.com

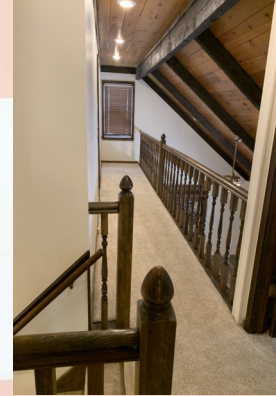
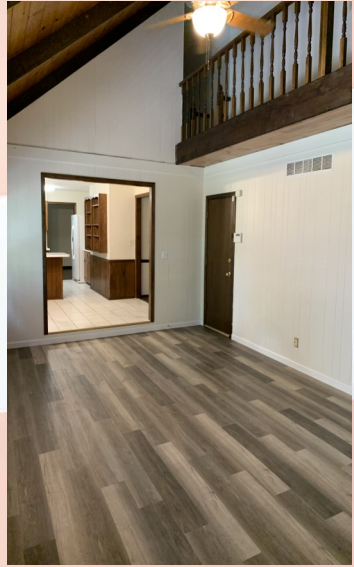
- **Type of Rental:** 2 Story Traditional with approx 2600 sq feet finished, plus full, unfinished basement for storage.
- **Monthly Rent:** \$1750
- Security deposit (one months rent) & Pet deposit if pet approved (1/2 months rent)
- **5 bedroom**, all on 2nd story
- **2.5 baths**, 2 on 2nd story to include master bath and hall bath, powder room main floor
- Kitchen: Appliances include Refrigerator, Gas range, electric oven, microwave, dishwasher.
- Traditional floor plan with formal living and dining rooms, plus Great (family) room which has vaulted ceiling and cat walk to 5th bedroom above. Kitchen and eat in dining area to back center of home.
- **Washer/Dryer hook ups** on main level and basement (basement hookups normally used by tenants).
- **Central air & heat**
- **Fenced yard**, Yes, chain link
- **2 car garage.**
- **Leavenworth School District.**
- Quiet street in an established neighborhood, approximately 10 minutes from Ft. Leavenworth.

1321 Holman, Leavenworth, KS

Main floor has spacious entry, formal living and formal dining rooms, kitchen with peninsula, dining nook, and powder room with washer and dryer hook ups. This level also has a large Great Room (family room) with vaulted ceilings and loft with easy care vinyl plank flooring. You enter the Great Room as you come in to the house from the garage. Deck and backyard access is also from the Great Room. Access to the unfinished basement is from the dining nook.



1321 Holman, Leavenworth, KS



View from second floor loft into Great room below. Also, views of bedrooms and hall bath located on this level. All 5 bedrooms are located on the second story and are very spacious compared to much newer homes.



1321 Holman, Leavenworth, KS



Views of Master bedroom and en suite as well as master walk in closet.



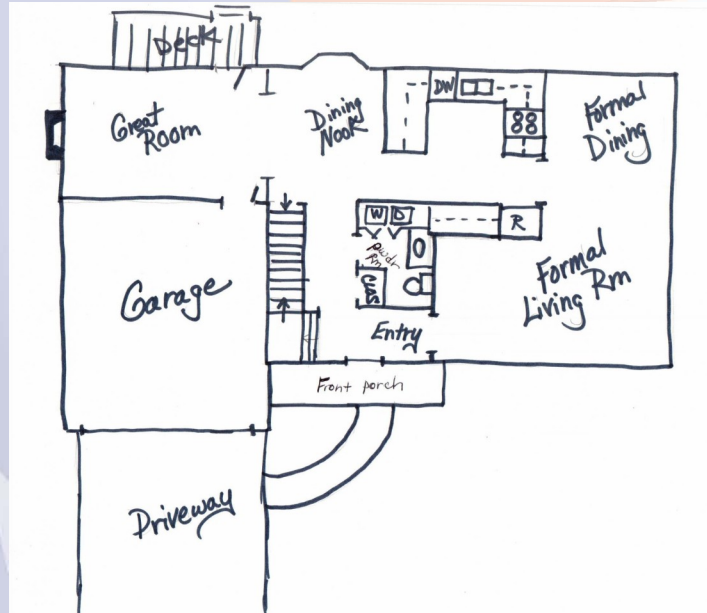
Yard views of property



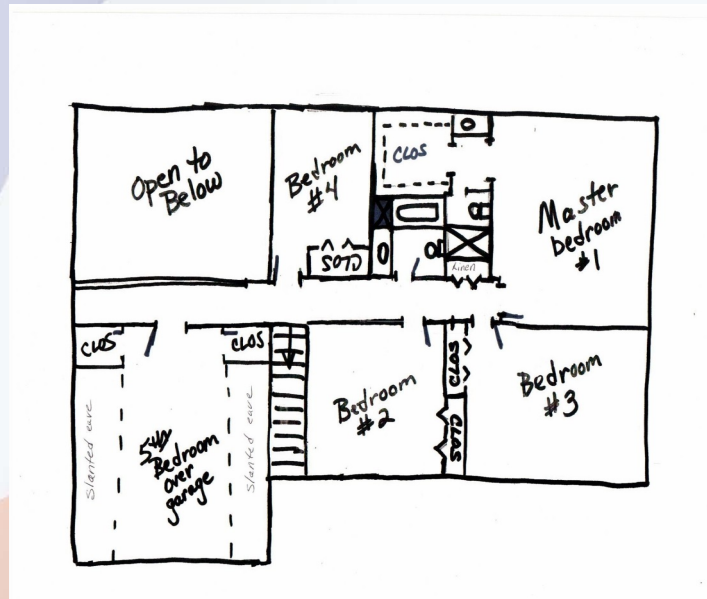
1321 Holman, Leavenworth, KS

Sketch of floor plan to show room placement—not to scale

1st Story (main)



2nd story



Full, unfinished basement under entire house (except under garage space), walk out door to access back yard (see exterior photo).