

Wellington on the Park Subdivision

1030 Wallis Ln, Leavenworth, KS

*Beautiful
ranch with
lots of
hardwoods!*



Hansen Properties

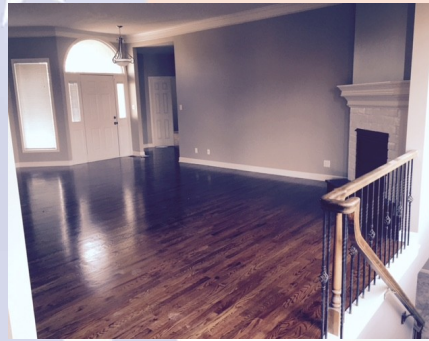
Rick & Shari Hansen
913.547.1113/1114
www.hansensproperties.com

Email:
Hansensproperties@yahoo.com

- **Type of Rental:** Ranch style home with finished basement, approx 3000 sq feet. Hardwoods on majority of main floor.
- **Monthly Rent:** \$2000
- Security deposit (one months rent) & Pet deposit if pet approved (1/2 months rent)
- **4 bedroom**, 2 Main level, 2 basement level.
- **3 full baths, 2 ML & 1 BL.** Master has large en suite with double vanity sinks, garden tub, separate shower & toilet room, large walk in closet.
- **Kitchen:** SS appliances include Refrigerator, electric range oven, microwave, & dishwasher., granite countertops. Eat in dining area off kitchen with deck access.
- Main floor great room with fireplace & formal dining space. BL has large family room with two large storage areas.
- Washer/Dryer hook ups: ML laundry room at garage entrance.
- Central air & heat
- Deck off dining nook
- **2 car garage**
- **Fenced Yard:** Fully fenced, wooden picket style fence with privacy fence to street.
- Leavenworth School District.
- Approx 10 min from Ft. Leavenworth.

1030 Wallis Ln, Leavenworth, KS

MAIN LEVEL: Front entrance leads you into a large great room with gleaming hardwoods, gas fireplace and formal dining space with a view to the beautiful backyard.



Kitchen has abundant cabinetry and stainless steel appliances as well as granite countertops. Hardwoods continue through the kitchen and eat in dining nook (breakfast room). Laundry room is located at the back entrance where you enter the house from the garage. Both master and second bedroom are on opposite side of main floor.



Second bedroom is also located on the main level to the front of the house. Hall bath has tub/shower combo.



1030 Wallis Ln, Leavenworth, KS

Master bath & en suite: Generous bedroom with large windows, hardwoods and grand en suite. This is located to the back of the house on the main floor.

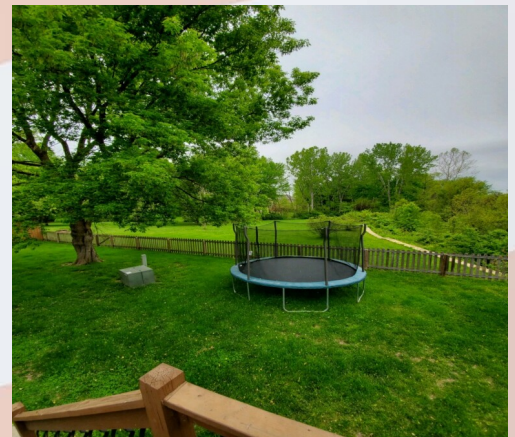
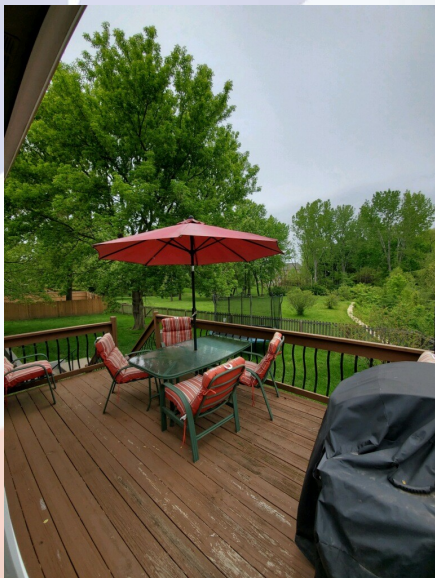


BASEMENT LEVEL: Finished with large family room, two bedrooms, and full bath. There are two large storage areas. You can access back yard and patio from family room.



1030 Wallis Ln, Leavenworth, KS

Basement bedrooms: Both are spacious and have great light from daylight windows. Storage areas hold a lot of stuff!



Exterior views of deck and yard. Yard extends well beyond fence so offers great privacy!